

—  
**KRONOTERM** 1976  
HEAT PUMPS



—  
THE HEART  
OF EVERY HOME.

—  
HEAT PUMPS



---

## ADVANTAGES

### ***Quiet and efficient***

Kronoterm heat pumps are quiet, efficient, and environmentally friendly heating systems that ensure cozy homes and big savings.

### ***Efficient any way you slice it***

Our heat pumps are so versatile that the same one will heat your house in winter and give you cool, refreshing relief in the summer. They are so well-built that they provide affordable heating even in sub-zero temperatures..

### ***Compatibility with other heating systems***

Your KRONOTERM heat pump can also be used as a smart device to manage other heating sources, such as oil, natural gas, or biomass.

### ***Friendly to your wallet and our planet***

The Kronoterm OptiWeather system automatically adjusts energy consumption according to the weather outside and the temperature inside, while even considering the weather forecast. Kronoterm heat pump saves you money by letting you connect solar cells, which can even lead to your heating costs that are absolutely free of charge.

### ***Accessible anytime and anywhere***

The CLOUD.KRONOTERM app lets you check on and adjust your heat pump's consumption, temperature output, and other settings anywhere, right from the palm of your hand.

### ***Modern and reliable***

Our heat pumps are extremely stable and reliable under any and all conditions. If something goes wrong despite all this, Kronoterm's team of dedicated, long-term support staff is waiting to give you the right answer, right away. We can even diagnose and solve problems remotely through the CLOUD.KRONOTERM system.

**5-23 kW** HEATING CAPACITY **50-550** M<sup>2</sup> SURFACE AREA

- For new construction and standing buildings
- In-floor heating and radiators
- Quieter than a fridge – 27 dB(a) at 1 meter
- A stable source of heat and hot water all year round
- Two models: more compact and upgraded with a built-in 200l boiler
- Extremely reliable and resilient – a stable source of heat for more than 25 years
- Heating in winter, cooling in summer



**THE KRONO GEO SYSTEM: WATER/WATER AND BRINE/WATER HEAT PUMPS**

The Krono Geo system is made up of the heat pump's interior and the thermal borehole or vertical ground collector.

These heat pumps provide a massive amount of heat while taking up little space. They work wonders both for in-floor and radiator heating systems.

**Water/water:** Its reliably constant temperature at between 7 and 12 °C makes underground water a great source of energy for our heat pumps.

**Brine/water:** The energy stored, waiting in the ground, is extracted by means of coiled pipes. These pipes are either configured across a large surface area (horizontal collector) or placed in deep boreholes (vertical collector). The amount of heat collected depends primarily on the composition of the ground, as well as the heat pump's efficiency.

- For new construction and standing buildings
- In-floor heating and radiators
- Automatic switching to the most affordable heat source
- Long lifespan
- Heating in winter, cooling in summer



**Outdoor units**

**5-23 kW** HEATING CAPACITY **50-550** M<sup>2</sup> SURFACE AREA

- Long lifespan
- Two types: A simple outdoor unit to extract heat from the ambient air, and an outdoor unit that derives heat from a combination of air and earth.
- Almost no defrosting

**THE KRONO MULTI S SYSTEM: COMBINED HEAT SOURCES**

The Krono MULTI S system is made of both an indoor and outdoor unit and a vertical borehole/collector.

Hybrid technology takes advantage of a combination of several heat sources, resulting in big savings on your energy bill. Kronoterm heat pumps primarily extract heat from the ground, but if the weather changes, they automatically switch to a cycle that takes advantage of the heat in ambient air. They work wonders both for in-floor and radiator heating systems.

**Indoor units**

**0.43** M<sup>2</sup> HEAT PUMP SIZE **27 dB(A)** NOISE LEVEL

- Quieter than a fridge – 27 dB(a) at 1 meter
- Small size (0.43m<sup>2</sup>)
- Thermally disinfects domestic hot water
- Compatibility with other heat sources
- Ability to connect to domestic solar cells
- Two tap water options – with or without a built-in boiler



**Noise levels**

|    |                  |
|----|------------------|
| 90 | ROCK CONCERT     |
| 80 | 18-WHEELER TRUCK |
| 70 | VACUUM CLEANER   |
| 60 | SPEECH           |
| 50 | BIRDS CHIRPING   |
| 40 | REFRIGERATOR     |
| 30 | BREATHING        |

MULTI S: 27

Noise level dB(a) at 1 meter away

- Affordable and easy to install and maintain
- Resilient in all weather conditions
- Works great with either monoblock or split pumps
- Built-in 6 kW electric heater
- Heating in winter, cooling in summer

**Outdoor units: Monoblock system** ADAPT 0312 - 0724

**3-24 kW** HEATING CAPACITY **50-550** M<sup>2</sup> SURFACE AREA

- For new construction and standing buildings
- In-floor heating and radiators
- Intelligent system for automatically adjustability to building and its heating and cooling needs
- MyDesign™ system - combines perfectly with the architecture
- works quietly, nearly silently even

**Indoor units: Monoblock system** HYDRO C - S

**300 l** HOT TAP WATER AT 60°C **NOISE-FREE** NOISE LEVEL

**HYDRO C:**

basic hydraulic modules with no buffer tank, wall mounted

**HYDRO S:**

built-in 200 l boiler for domestic hot water  
bult-in 50 l buffer tank for increased efficiency

**Outdoor units: Split system** WPLV-09-14

**9-14 kW** HEATING CAPACITY **50-300** M<sup>2</sup> SURFACE AREA

- For new construction and standing buildings
- In-floor heating and radiators
- Automatically regulated compressor strength given the desired temperature

**Indoor units** TT3000-3003, HM 130-141-142

**-25/+40** EFFICIENT AT °C

**TT3000 / TT3003:**

the two basic models, wall mounted

**HM 130/ HM140:**

basic hydraulic modules with no buffer tank, wall mounted

**HM 131/ HM141:**

bult-in 50 l buffer tank for increased system efficiency and increased comfort, wall mounted

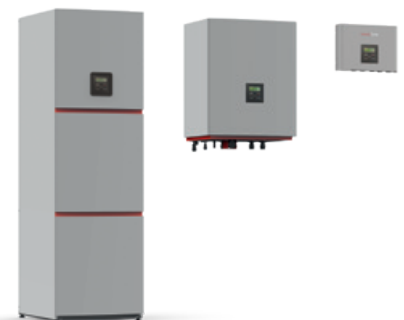
**HM142:**

built-in 200 l boiler for domestic hot water  
bult-in 50 l buffer tank for increased efficiency

**THE ADAPT & KRONO AIR SYSTEM: HEAT PUMPS AIR/WATER**

**The ADAPT and Krono AIR system are made of an indoor and outdoor unit.**

Easy access and the omnipresence of air make air/water heat pumps a wonderfully affordable type of heating system that is also easy and inexpensive both to install and maintain. Modern heat pumps can even extract heat when the ambient temperature is below freezing, and, when the temperature drops even further, it effortlessly combines other heat sources into the system.



## SIMPLE MANAGEMENT

Other than the feeling of warmth and comfort, the only sign of your heat pump is an elegant wall-mounted interface. Choose between two models: the basic KT1 and the advanced KT2, which, in addition to displaying and adjusting room temperature based on your desires and the outside temperature, provide users with a range of smart functions for automatically regulating air and water temperature.

- Installed under or over plaster layer
- H: 80, W: 80, D: 8.6 mm (KT1)
- H: 80, W: 122, D: 8.6 mm (KT2)

### Smart Functions of the KT2 Model

- Pre-installed temperature programs
- Display of 2-day weather forecast
- Control over boiler temperature



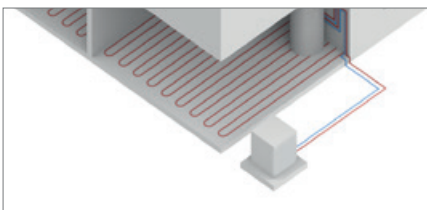
## CLOUD.KRONOTERM

The CLOUD.KRONOTERM connection makes your heat pump smart, so it learns what settings you find most comfortable, while still saving energy. Control it with your phone anytime and anywhere, right from the palm of our hand. It gives you the ability to set different time programs to heat and cool your rooms and your domestic hot water, a display of operation statistics and metrics, as well as optimization of usage and diagnostics for remote repairs.

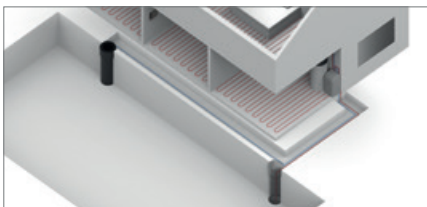


The CLOUD.KRONOTERM app and internet access are already installed serially in all of our heat pumps, and using the CLOUD.KRONOTERM system is completely free of charge.

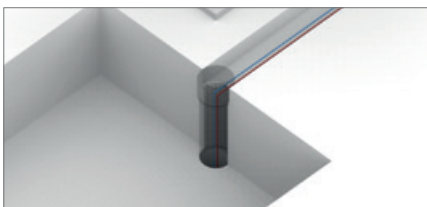
### Display of heat sources:



AIR/WATER

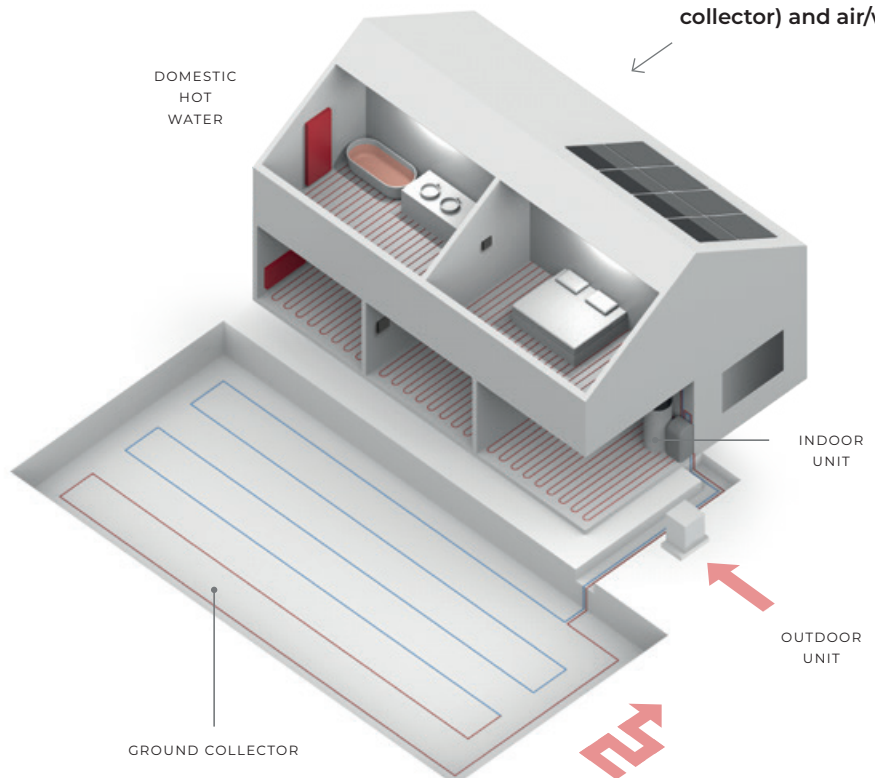


WATER/WATER



BRINE/WATER - VERTICAL COLLECTOR

A model Krono system MULTI S brine/water (ground collector) and air/water





---

## CONTINUING A TRADITION FROM 1976

This family-run company from Slovenia has spent the past 50 years developing its reputation among the world's few producers of state-of-the-art heat pumps. Today KRONOTERM is a name that is synonymous with excellence, dependability, and friendliness – both to customers and to the environment.



---

## FAMILY, TRADITION, AND COMMITMENT TO EXCELLENCE

The founder of this family company, Rudi Kronovšek, developed his first boiler heat pump in 1976. The 1990s saw this workshop transform into a proper company. It began developing and selling its first commercial heat pumps at the turn of the new millennium. Today it is making headway on the demanding markets of Austria, Italy, Germany, and Switzerland.



---

## LEADING SPECIALISTS IN HEAT PUMPS

KRONOTERM offers a wide range of heat pumps for boilers, heating, and industrial settings, including models that have earned the attractive title of "most efficient heat pumps in Europe". As a respected market leader, KRONOTERM also has productive collaborations with many internationally recognized companies, universities, and other institutions.



---

## IMPECCABILITY FROM START TO FINISH

All KRONOTERM products are world-class solutions, tested exhaustively at our labs. Their technical perfection ranges from operation (efficiency and reliability) to their long lifecycle (with well-designed housings to aid in day-to-day handling). World-class customer service is another part of the KRONOTERM experience.



Contractual retailer/installer:

Members: 

